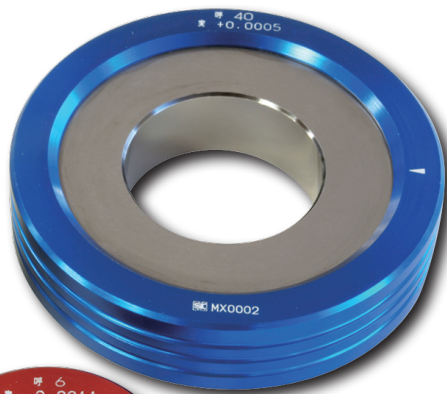
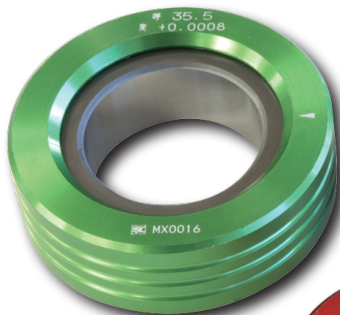


RING GAUGE (with protective cover)

No - Slip and Easy to Handle , will increase productivity

- A ring gauge embedded in Aluminum Protective Cover
- Covered gauge is easier to handle with dirty hands Less susceptible to thermal expansion when holding a gauge by hand
- Protects from chipping when dropped

CARBIDE RING GAUGE (with Protective Cover)



STEEL RING GAUGE (with Protective Cover)



CERAMIC RING GAUGE (with Protective Cover)

MATERIAL ● Protective Cover: Anodized Aluminum
● Gauge: Steel / Carbide / Ceramic

SPECIFICATIONS

Size (mm)	Step (mm)	Roundness · Cylindricity (μm)	Tolerance (μm)
1 to less than 2 (Steel & Carbide only)	1mm step	0.5	±1
2 to less than 30	1mm step	0.5	±1
30 to less than 50	1mm step	0.8	±1.5

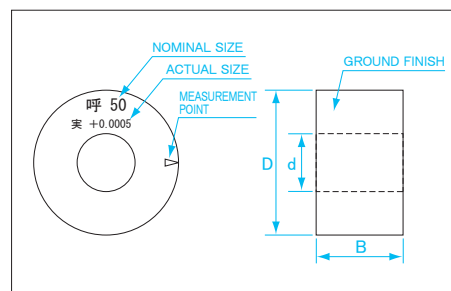
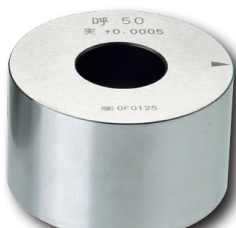
STEEL RING GAUGE OD model

New Product! Available from φ40 - 400mm. Simple calibration or 0 adjustment of outside measuring instrument

For quick calibration of micrometer

MATERIAL Alloy tool steel

SPECIFICATIONS Hardness: HV653-772



SPECIFICATIONS

Size D (mm)	Step (mm)	OD tolerance (μm)	Out of Roundness (μm)	Out of Cylindricity (μm)	Thickness B (mm)	Hole Diameter d (mm)
40 to less than 50	10.0 step	±3	1.5	1.5	30	20
50 to less than 70		±5	2.5	2.5		30
70 to less than 100						40
100 to less than 150						50
150 to less than 200						80
200 to less than 300						160
300 to less than 350				200		
350 to less than 375				250		
375 to less than 400						

